

# HIGHLIGHTS

VOL. 44, ISSUE 7

Look for us online @ [www.bighornrea.com](http://www.bighornrea.com)

AUGUST 2023



## safety **FIRST!**

### *Watch Out for Electrical Hazards on the Farm*

Those who live on a farm know that not only is it hard work, but it can be dangerous, too. Each year, farmers are electrocuted when large farm machinery comes into contact with overhead power lines.

Often, the situation occurs because a newer, bigger piece of equipment no longer clears a line the way a smaller one did. In addition,



**Did you know that simply working too close to a power line can be deadly? Electricity can arc or “jump” to conducting objects, such as a ladder, pole or truck.**

shifting soil may also affect whether or not machinery avoids power lines from year to year.

The following tips will help keep everyone on a farm safe:

- ✓ Look over work areas carefully for overhead power lines and utility poles.
- ✓ Make sure you have ample clearance when moving large machinery such as combines, grain augers, pickers, bailers, and front-end loaders. Do this every year as equipment sizes or soil conditions may change.
- ✓ Store large equipment properly if near or under power lines. When planning new construction, factor in existing power lines.
- ✓ Be extra careful when working around trees and brush; they often make it difficult to see power lines.

### INSIDE

**Autopay.....2**  
**Kids Outdoor Day.....2**  
**New Face at BHREA.....2**  
**Member Beware.....3**  
**Keeping You Safe.....3**  
**Tip of the Month.....3**  
**What's On That Pole.....4**

### CLOSED

**Big Horn REA offices will be closed Monday, September 4, 2023 in observance of Labor Day.**



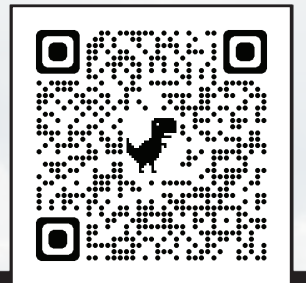
Honoring the American Worker



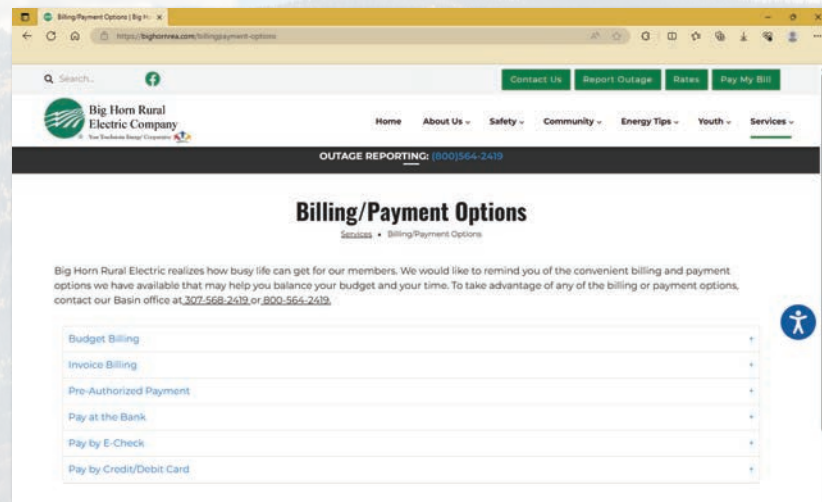
## Does your mail service have you going postal?

### If so, now is a good time to sign up for AutoPay!

- It's easy, convenient, and fast!
- Saves you time – your monthly payment is processed automatically.
- No postage or check – save the hassle of writing a check every month, paying postage every time it goes up and getting it mailed on time.
- Avoid late payments and past due bills – whether you're home or away this service keeps your payments on time since the payments are already scheduled for you. Payments are run on the 21st of the month or the Friday before or the Monday after if it falls on the weekend.
- Get the form on our website at <https://bighornrea.com/billingpayment-options> under Pre-Authorized Payment. Fill it out and return it with a voided check before or after your payment and we'll get you set up!



SCAN ME



SAVE THE DATE FOR

# MEDICINE LODGE KIDS OUTDOOR DAY

## 8.26.2023

REGISTRATION COMING SOON

## New Face at Big Horn REA

### NEW LINE SUPERINTENDENT FOR BIG HORN REA

Randy Theasmeyer has joined the team as the new Line Superintendent for Big Horn REA!



Prior to coming to Big Horn REA, Randy worked at Norris Public Power in Nebraska for 34 years. Randy brings a wealth of knowledge with him to the position, and we are lucky to have him.

## Keeping you safe during and after summer storms

No one knows electrical safety better than the experts who practice it every single day. Big Horn REA encourages you to practice safety with these reminders – for during and after a summer storm:

**Avoid wires and water** — When lightning strikes a home during a storm, the electrical charge can surge through pipes and utility wires. That means you can get zapped if you're touching water or any device that's plugged in, whether it's a land-line phone or toaster.

**Skip the makeshift shelter** — During a storm, it's tempting to take cover under a picnic gazebo or golf cart, but in open-sided structures with no conductors to channel strikes, a bolt's path of least resistance to the ground could be you. On top of that, these structures raise your risk of a lightning strike because of their height. Keep moving toward suitable shelter.

**Portable generators** — Take special care with portable generators, which can provide a good source of power, but if improperly

installed or operated, can become deadly. Do not connect generators directly to household wiring. Power from generators can back-feed along power lines and electrocute anyone coming in contact with them, including co-op line workers making repairs. It's best to hire a qualified, licensed electrician to install your generator and ensure that it meets local electrical codes.

**Flooded areas** — Stay away from downed power lines and avoid walking through flooded areas. Pow-

er lines could be submerged and still live with electricity. Report any downed lines you see to Big Horn REA by calling (800)564-2419 or 568-2419 immediately.

**Electrical equipment** — Never use electrical equipment that is wet – especially outdoor electrical equipment, which could be a potential danger after a summer storm. Water can damage electrical equipment and parts, posing a shock or fire hazard.



## MEMBER BEWARE

Many scams are going on including deceptive sales tactics for the sale of solar panels. Be very careful about accepting sales pitches, especially those that are pushy or sound too good to be true. These may be something like: "this will eliminate your electric bill", "the utility will write you a check", "this will power your home during an outage", or "this will cost you nothing up front".

BEFORE you sign a contract to install solar generation, PLEASE call us. Your best interests are our concern, and many installers are only concerned with making a sale and profit - not about you.

In addition, there is a process members must follow in order to interconnect with Big Horn's power lines - an Application for Operation of Customer-Owned Generation, submittal of the Interconnection Agreement, a \$1,000 application fee and pay costs of installation of net metering and all related equipment.

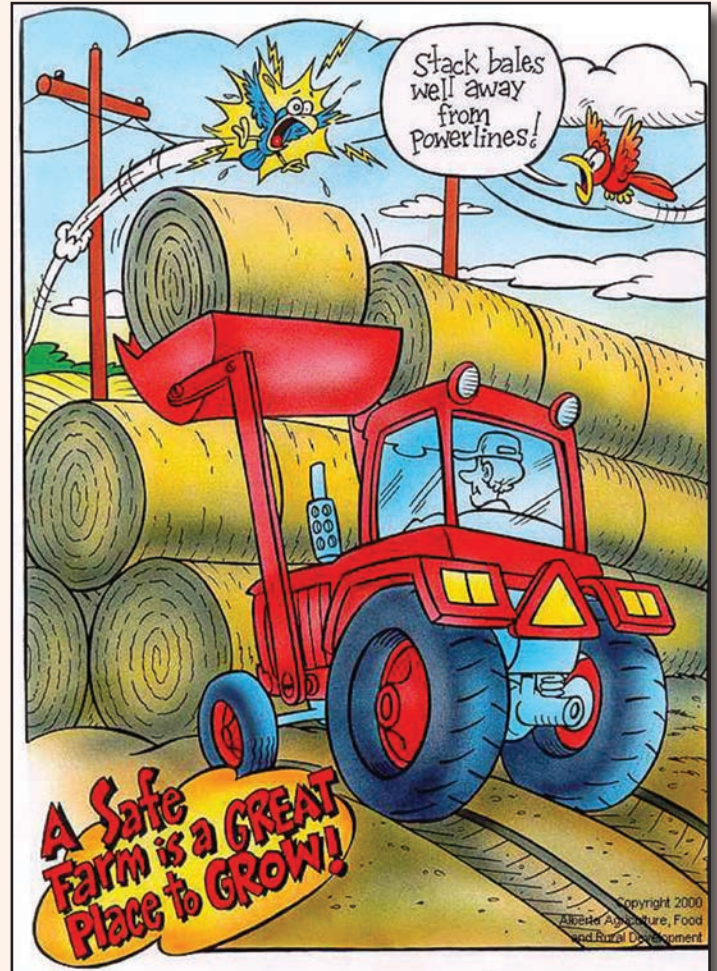
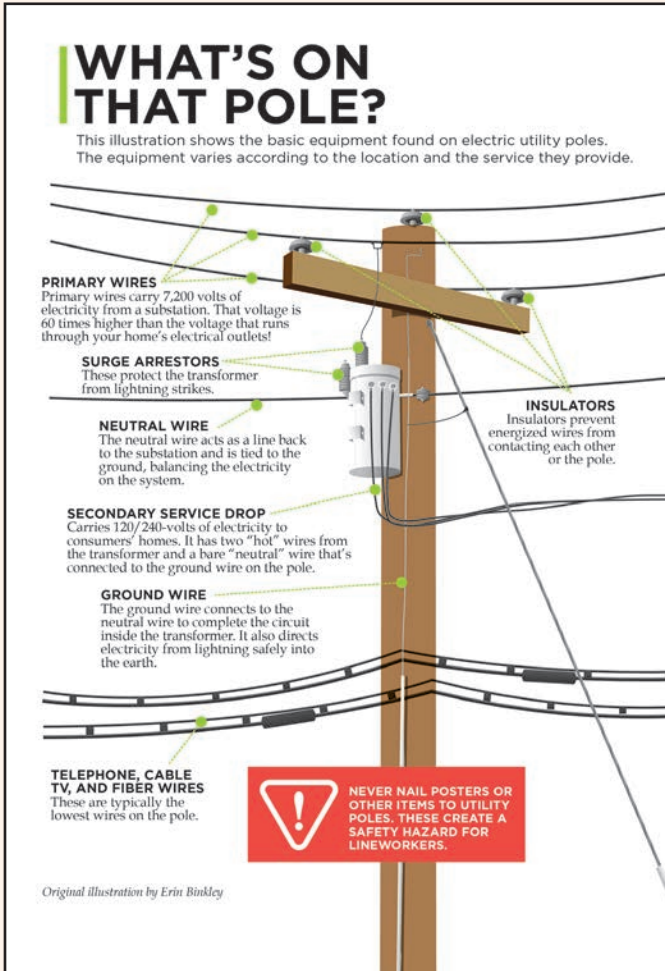
## Energy Efficiency Tip of the Month

Did you know ceiling fans can make a room feel 4 degrees cooler? To save energy through ceiling fan use, remember to raise your thermostat a few degrees while fans are turned on. Ceiling fans can help improve comfort year-round. In the summer, operate ceiling fans in a counterclockwise direction. Reverse the direction to clockwise during winter months and set fans on a low speed so warm air can circulate from the ceiling to the lower levels of the room. Remember, ceiling fans cool people, not spaces. Be sure to turn them off when you leave the room.



Source: Dept. of Energy





## HIGHLIGHTS

is an official publication of  
BIG HORN RURAL  
ELECTRIC COMPANY

Box 270 VOLUME 44 NO. 5  
Basin, WY 82410 (307) 568-2419  
FAX 307-568-2402 1-800-564-2419

[bhrec@bighornrea.com](mailto:bhrec@bighornrea.com)  
[www.bighornrea.com](http://www.bighornrea.com)



Make sure to check out our QR Code to reach our website quicker, and make sure to follow us on Facebook for any outage updates!

[www.facebook.com/BigHornRuralElectric](http://www.facebook.com/BigHornRuralElectric)



**MANAGER:** Jeff Umphlett

(307) 899-8153

[jeff@bighornrea.com](mailto:jeff@bighornrea.com)

### Staff and Crew

Dotti Brown  
Rusty Burden  
Clint Getzfreid  
Todd Herman  
Jazmin Jara  
Wade Koehn  
Heather Lawrence

Anthony Nelson  
Bill Phillips  
Aileen Schriener  
Tristen Snyder  
Greg Tharp  
Randy Theasmeyer  
Justin Workman

### Board of Directors

John Joyce ..... President  
Manderson • 568-2514 - [jnjoyce56@gmail.com](mailto:jnjoyce56@gmail.com)  
Willie Bridges ..... Vice President  
Cowley • 548-2545 - [willieb@pryormtng.com](mailto:willieb@pryormtng.com)  
Steve Helburn ..... Secretary  
Greybull • 765-2900 - [stevehelburn@gmail.com](mailto:stevehelburn@gmail.com)  
Sara Schlattmann ..... Treasurer  
Otto • 921-2024 - [hortonwyo@gmail.com](mailto:hortonwyo@gmail.com)  
John Fernandez ..... Director  
Meeteetse • 272-1553 - [john@bighornrea.com](mailto:john@bighornrea.com)

### For Outages or Trouble

Call the office number: **ANYTIME**  
(307) 568-2419 or 1-800-564-2419

After 5 p.m., weekends and holidays all calls will be answered by our professional answering service, who will contact the appropriate person(s).



Big Horn Rural Electric Company is an equal opportunity provider and employer.