

# HIGHLIGHTS

VOL. 44, ISSUE 8

Look for us online @ [www.bighornrea.com](http://www.bighornrea.com)

SEPTEMBER 2023

## Tips for a Safe Harvest

Agriculture is the backbone of our country, and our livelihood greatly depends on the crops provided by American farmers. In addition to being one of the most labor-intensive professions, farming is also considered one of the most dangerous jobs in the U.S.

The hard work and exhaustive labor are tough but rushing the job to save time can be extremely dangerous—even deadly—when farming near electrical equipment.

Every year, we see collisions where tractors and other farming equipment accidentally collide with utility poles and power lines, causing injuries and power outages. These dangerous accidents can be avoided by looking up and around your surroundings when operating large farm machinery. If you're preparing for harvest season, please keep the following safety tips in mind:

- Maintain a 10-foot clearance around all utility equipment in all directions.
- Use a spotter and deployed flags to maintain safe distances from power lines and other electrical equipment when working in the field.
- If your equipment makes contact with an energized or downed power line, contact 9-1-1



immediately and remain inside the vehicle until the power line is de-energized. In case of smoke or fire, exit the cab by making a solid jump out of the cab (without touching it), and hop away to safety.

- Consider equipment and cargo extensions of your vehicle. Lumber, hay, tree limbs, irrigation pipes and even bulk materials can conduct electricity, so keep them out of contact with electrical equipment.

September 17-23 is National Farm Health and Safety Week but practicing safety on the farm year-round yields positive results. We hope you never find yourself in a situation where farming equipment contacts power lines or poles, but if you do, we hope you'll remember these safety tips.

### INSIDE

**Summer Wrap up..... 2**  
**Safety Tips For Hunters.. 3**  
**Poles are not Bulletin Boards ..... 3**  
**Tip of the Month..... 3**  
**IMPORTANT Press Release ..... 4**

### CLOSED

*Big Horn REA offices will be closed Monday, September 4, 2023 in observance of Labor Day.*



Honoring the American Worker

# Summer Wrap-up

Summer comes and goes, and like every other summer we've been busy! We had two students attend Energy Camp in Steamboat Springs, Colorado in July, Adelle Olson and Jessica Mendez. To wrap things up Lineman Rusty Burden and Member Service Rep Jazmin

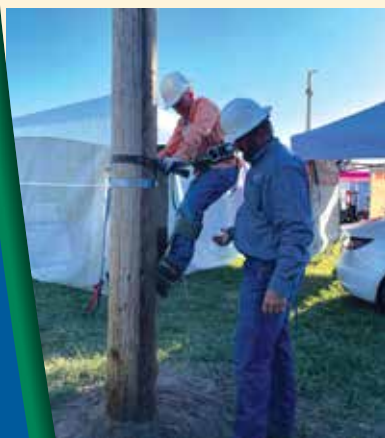
Jara attended the Wyoming State Fair. They attended the first day of the Wyoming State Fair where they assisted with the WREA booth educating about safety, the advantages of a cooperative, and giving youth an opportunity to climb a pole.



## COOPERATIVE YOUTH LEADERSHIP CAMP



## WYOMING STATE FAIR



### ELECTRICAL SAFETY TIPS FOR HUNTERS

This hunting season, we encourage all members to be aware of electrical equipment and take necessary precautions while hunting. Keep these safety tips in mind as you enjoy the great outdoors.

-  **Take notice** of posted warning signs and keep clear of electrical equipment.
-  **Do not** shoot at or near power lines or insulators.
-  **Know** where power lines and equipment are located on the land where you hunt.
-  **Be especially careful** in wooded areas where power lines may not be as visible.
-  **Do not** place deer stands on utility poles or climb poles. Energized lines and equipment can conduct electricity to anyone who comes in contact with them, causing shock or electrocution.
-  **Do not** place decoys on power lines or other utility equipment. Any non-electrical equipment attached to a pole can pose an obstruction and serious hazards to our line crews.

### Utility poles are not bulletin boards

Help keep our lineworkers safe

Big Horn REA would like to remind everyone that it is prohibited to attach objects to our utility poles, such as: campaign signs, garage sale signs, lost and found signs, deer stands, birdhouses, satellite dishes, etc. Signs on utility poles raise major safety concerns for our lineworkers. Staples, tacks and nails can cause more serious injuries than most people would suspect. For example, if a nail tears an insulated glove, the lineworker is no longer properly protected from the high-voltage power lines they work on. Also, nails and staples can cause the lineworker's boot spikes to cut-out of the pole, causing a serious fall from a dangerous height. In order to ensure reliable electric service, lineworkers sometimes have to climb poles in all kinds of weather, day and night. We need your help. If you notice anyone trying to attach something to a utility pole, let them know it's dangerous and illegal. Thank you for your cooperation.

### Energy Efficiency Tip of the Month

Did you know fall is the perfect time to schedule a tune-up for your heating system? Home heating accounts for a large portion of winter energy bills, and no matter what kind of system you have, you can save energy and money by regularly maintaining your equipment.

Combining proper equipment maintenance and upgrades with recommended insulation, air sealing and thermostat settings can save 30% on your energy bills.



Your Touchstone Energy® Cooperative 



**Big Horn Rural Electric Company along with Carbon Power & Light, Garland Light & Power, and High Plains Power recently released the following statement relative to the four utilities hiring a consultant to examine possible cost savings and a potential consolidation. The board members of all the cooperatives will do a thorough review of the study and many other issues in considering a possible consolidation.**

**Your board members of Big Horn REA will ensure that the best interest of our members remain the top priority throughout all discussions and reviews. As information becomes available we will provide updates. So please continue to read the WREN magazine and see us on Facebook.**

**If you have questions or comments, please feel free to contact any of your board members or manager Jeff Umphlett.**

**PRESS RELEASE**

**For immediate release:**

8/9/2023  
Contact:  
Joe Parrie  
Director of Member Services and Marketing  
jparrie@carbonpower.com  
307-326-5206

Big Horn Rural Electric Company, Carbon Power and Light, Garland Light and Power, and High Plains Power, Inc. collectively (Cooperatives) have hired a consulting firm to conduct a study to examine if there are possible cost savings to our members by consolidating such activities as: administrative, operations, and power costs. Besides cost

savings the study will examine the pros and cons of any proposed action(s) including the potential consolidation of entities.

The Cooperatives collectively serve roughly 26,000 meters, 8,500 miles of power line, have 97 combined employees, 28 board members, and serve the vast majority of central rural Wyoming.

It is anticipated that the feasibility study be completed by end of 2023 and the entities will review the results during the first quarter of 2024 and any potential benefits will be discussed with Members at that time. Any consolidation would require a membership vote of all the cooperatives. Our vision is to lead by providing safe, reliable, and affordable power to our member-owners.

**HIGHLIGHTS**

is an official publication of  
**BIG HORN RURAL  
ELECTRIC COMPANY**

Box 270 VOLUME 44 NO. 5  
Basin, WY 82410 (307) 568-2419  
FAX 307-568-2402 1-800-564-2419

[bhrec@bighornrea.com](mailto:bhrec@bighornrea.com)  
[www.bighornrea.com](http://www.bighornrea.com)



Make sure to check out our QR Code to reach our website quicker, and make sure to follow us on Facebook for any outage updates!

[www.facebook.com/BigHornRuralElectric](http://www.facebook.com/BigHornRuralElectric)



**MANAGER: Jeff Umphlett**

(307) 899-8153  
[jeff@bighornrea.com](mailto:jeff@bighornrea.com)

**Staff and Crew**

Dotti Brown Anthony Nelson  
Rusty Burden Bill Phillips  
Clint Getzfreid Aileen Schriener  
Todd Herman Tristen Snyder  
Jazmin Jara Greg Tharp  
Wade Koehn Randy Theasmeyer  
Heather Lawrence Justin Workman

**For Outages or Trouble**

Call the office number: **ANYTIME**  
(307) 568-2419 or 1-800-564-2419

After 5 p.m., weekends and holidays all calls will be answered by our professional answering service, who will contact the appropriate person(s).

**Board of Directors**

John Joyce ..... President  
Manderson • 568-2514 - [jnjoyce56@gmail.com](mailto:jnjoyce56@gmail.com)  
Willie Bridges ..... Vice President  
Cowley • 548-2545 - [willieb@pryormtng.com](mailto:willieb@pryormtng.com)  
Steve Helburn ..... Secretary  
Greybull • 765-2900 - [stevehelburn@gmail.com](mailto:stevehelburn@gmail.com)  
Sara Schlattmann ..... Treasurer  
Otto • 921-2024 - [hortonwyo@gmail.com](mailto:hortonwyo@gmail.com)  
John Fernandez ..... Director  
Meeteetse • 272-1553 - [john@bighornrea.com](mailto:john@bighornrea.com)



Big Horn Rural Electric Company is an equal opportunity provider and employer.